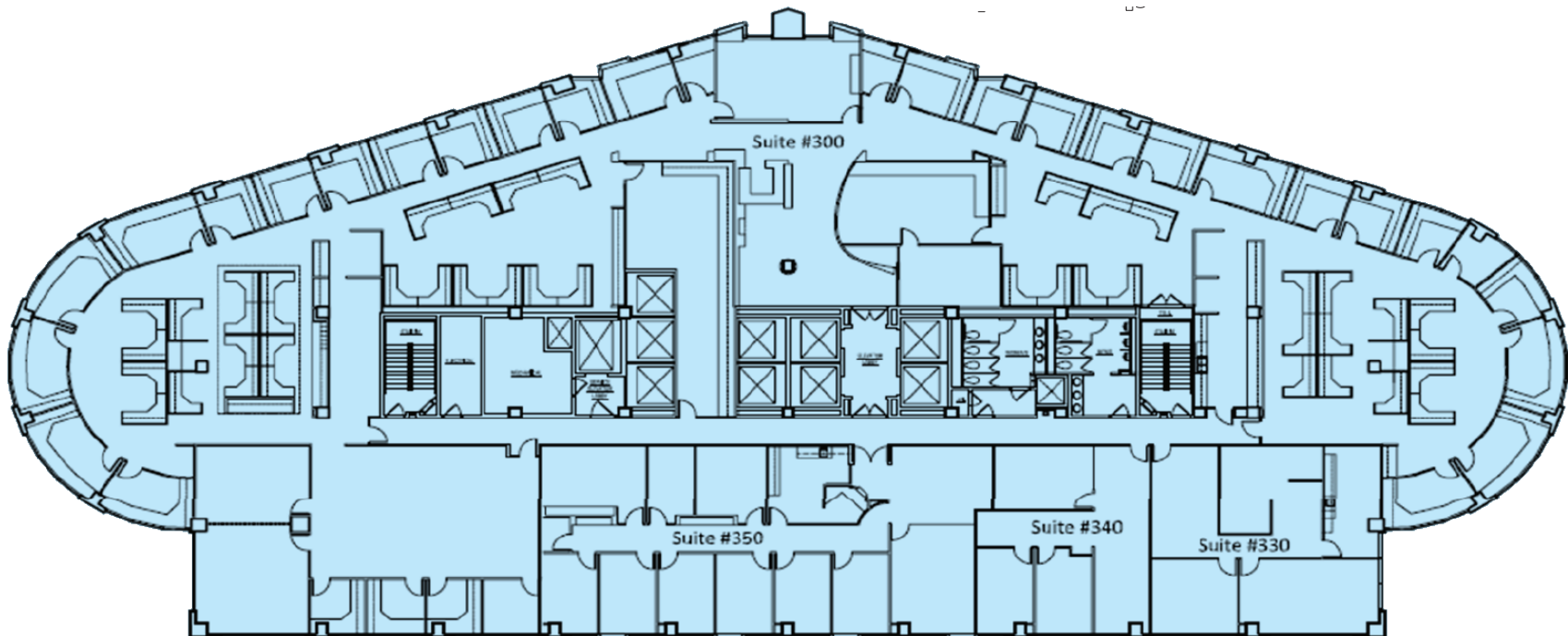




# WEDBUSH CENTER

1000 WILSHIRE BLVD

3rd Floor : 23,881 RSF



Rate: \$26.50 NNN | Full floor opportunity

FOR LEASING INFORMATION, PLEASE CONTACT:

LINCOLN  
PROPERTY  
COMPANY

Douglas Brown 213.542.8247 [dbrown@lpc.com](mailto:dbrown@lpc.com) | Kent Handleman 213.542.8246 [khandleman@lpc.com](mailto:khandleman@lpc.com) | Sam Herrera 213.542.8242 [sherrera@lpc.com](mailto:sherrera@lpc.com)

[WedbushCenterLA.com](http://WedbushCenterLA.com)